

Usage
Recommendations:

Primary Welding Processes:
Stick, Flux-Cored

Secondary Welding Processes:
MIG, Pulsed MIG

**Recommended
Amperage Range:**
50A - 325A

TOP FEATURES



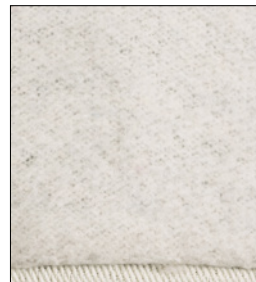
Designed for Women

Specially designed for female hand sizes to provide a comfortable, snug fit that protects from select welding, cutting and handling hazards.



All Leather Construction

Designed for various applications, the complete leather outside construction protects the hands and wrist from spatter, flames and sparks while also providing heat resistance.



Comfortable & Heat Resistant Liners

The cotton hand liner provides heat resistance and comfort while the cotton twill inside cuff liner absorbs moisture.

Women's Traditional Stick / MIG Welding Gloves



Usage
Recommendations:

Primary Welding Processes:
TIG, Pulsed TIG

Secondary Welding Processes:
Low Amperage MIG

**Recommended
Amperage Range:**
1A - 200A

TOP FEATURES



Designed for Women

Specially designed for female hand sizes to provide a comfortable, snug fit that protects from select welding, cutting and handling hazards.



Grain Leather Construction

The high quality grain leather design provides comfort, dexterity and durability for light welding and a variety of material handling applications.



Padded Palm

The cushioned palm improves grip and provides material handling support. The Kevlar stitching adds durability for longer glove life.

Women's Full Leather SteelWorker™ Welding Gloves

